

PROJECT DATA

BLOCK: 235 LOT: 1
 PROPERTY AREA: 385,303 S.F. 8.845 AC.

BUILDING SUMMARY:	UNITS	S.F.
"A" RESIDENTIAL	76	93,516 S.F.
"B" RESIDENTIAL	104	130,112 S.F.
"C" RESIDENTIAL	104	130,112 S.F.
"D" RESIDENTIAL	90	113,216 S.F.
"E" CLUBHOUSE	N/A	6,500 S.F.
TOTAL	374	473,456 S.F.

BEDROOM COUNT:

1 BEDROOM (66.67%)	249 UNITS X 1 =	249 BEDS
2 BEDROOM (29.33%)	110 UNITS X 2 =	220 BEDS
3 BEDROOM (4.00%)	15 UNITS X 3 =	45 BEDS
		514 BEDS

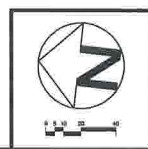
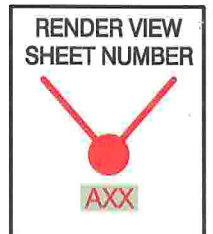
BUILDING SETBACKS:

FRONT	35 FT.
REAR	25 FT.
SIDE (MIN.)	20 FT.

HEIGHT: 5 LEVELS/60 FT.

COVERAGE (50% MAX.):	31.98%	123,220 S.F.
OPEN SPACE (15% MIN.):	40.00%	153,375 S.F.
IMPERVIOUS (85% MAX):	60.00%	231,928 S.F.

CAR PARKING PROVIDED (9'X18'): 464 SPACES
 PARKING / RESIDENTIAL UNIT: 1.24 SPACES
 PARKING / BEDROOM: 0.90 SPACES



PROPOSED RESIDENCES AT
MEADOW CROSSING

TOWNSHIP OF LYNDHURST, BERGEN COUNTY, NEW JERSEY

CONCEPTUAL
 SITE PLAN
A2

Date: 10/3/08